

Stadthalle am Pumpwerk

Wilhelmshaven

LADEHOFF
ARCHITEKTURBÜRO

14.06.23

Luftbilder







Umgebungsfotos



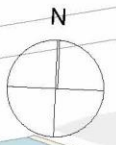
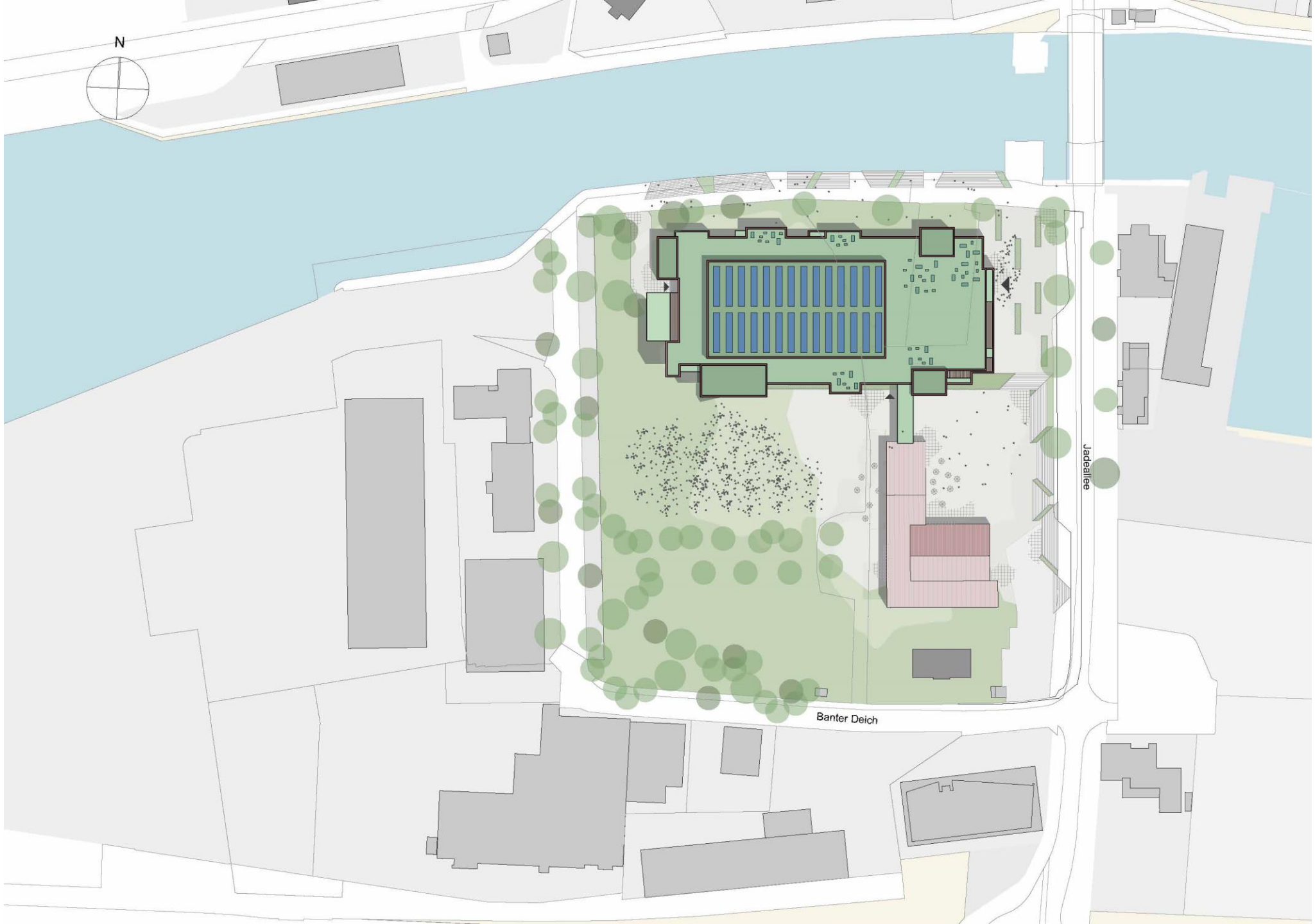




Lageplan



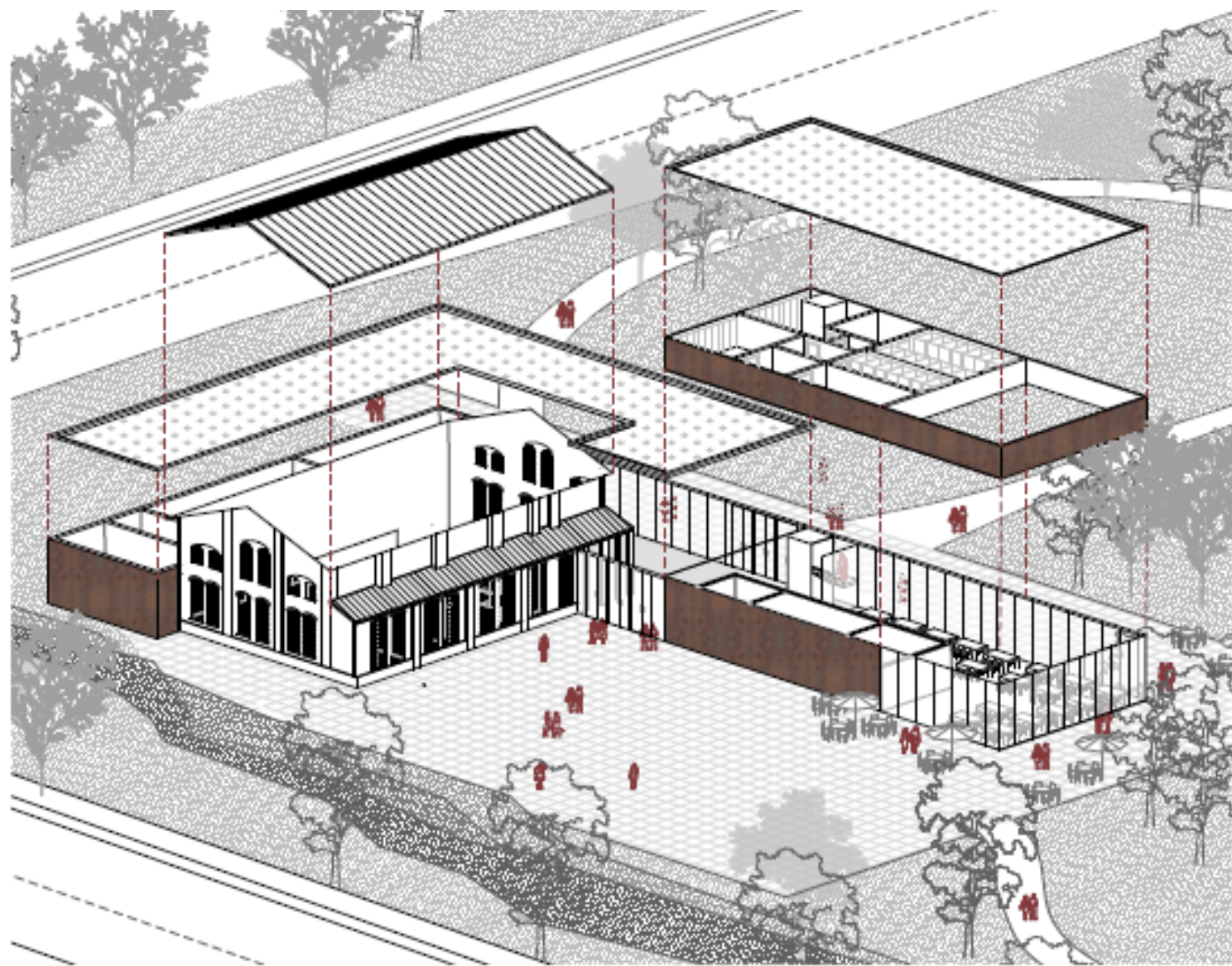




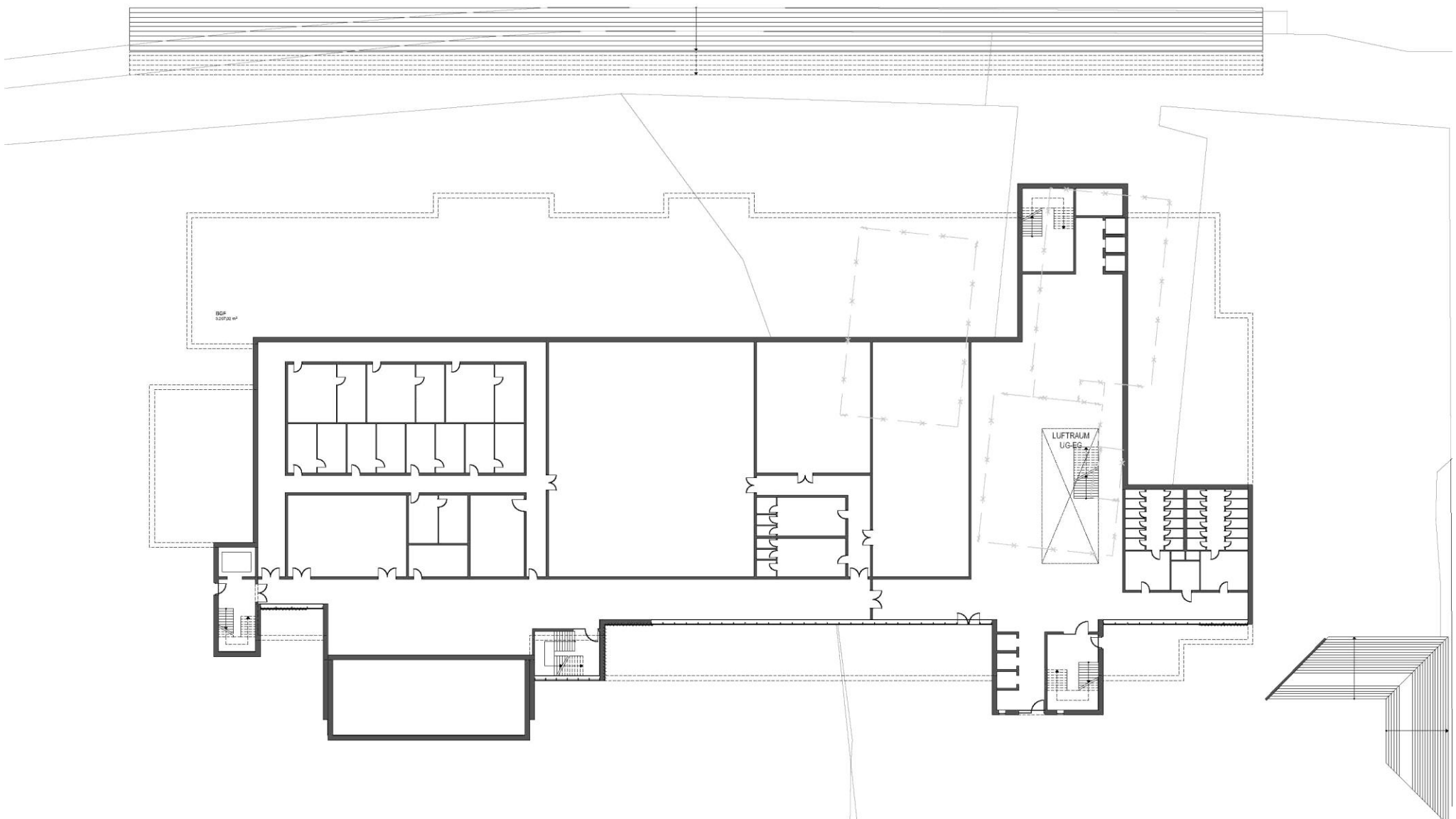
Jadeallee

Banter Deich

Geplante Erweiterung Pumpwerk

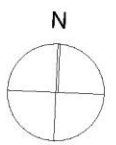


Grundrisse Stadthalle

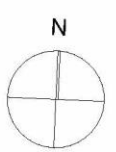


BGF
9.07.00 m²

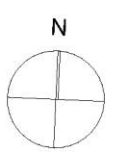
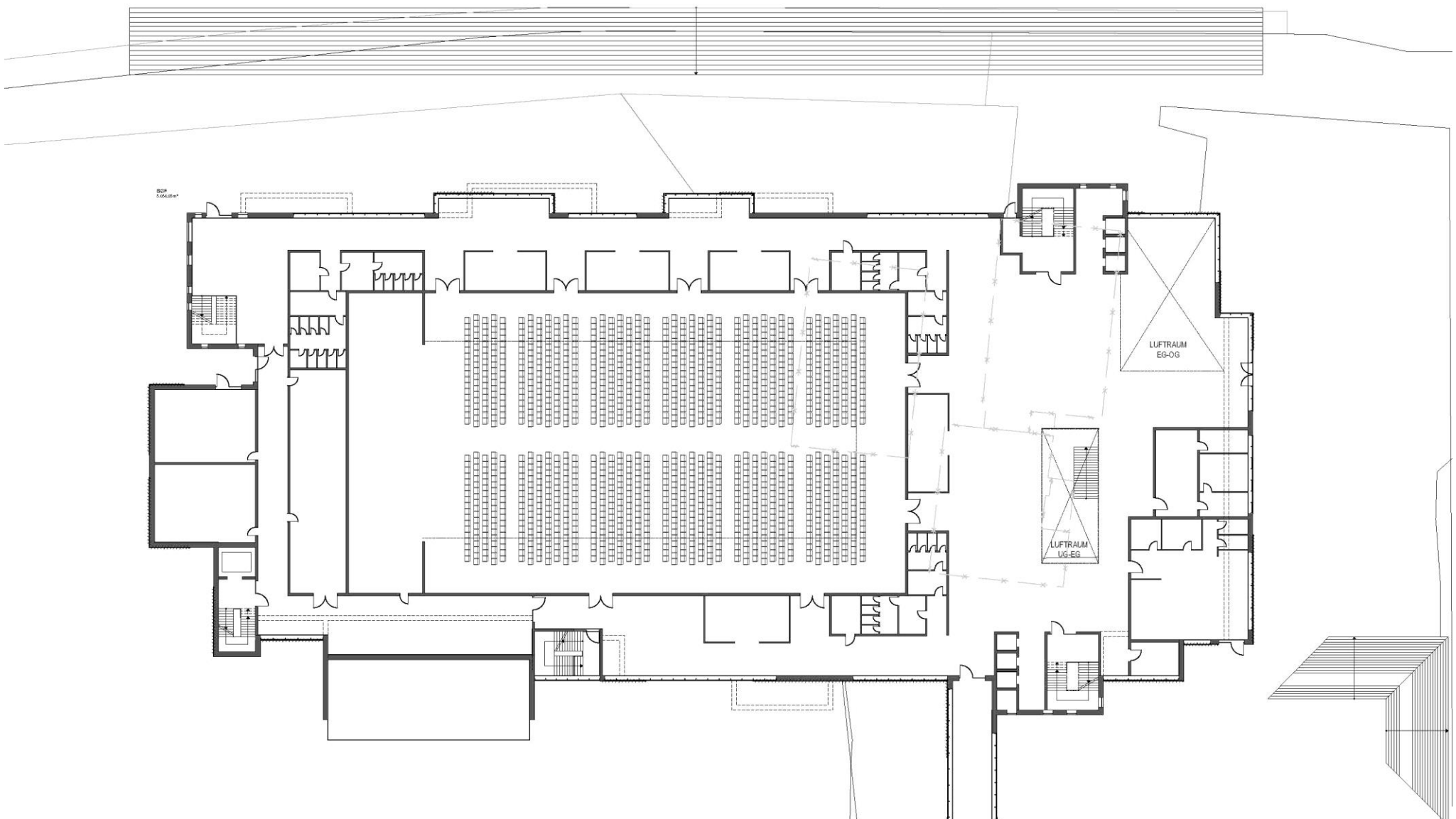
LUFTRAUM
UG-EG.



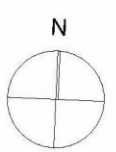
Untergeschoss



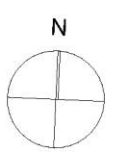
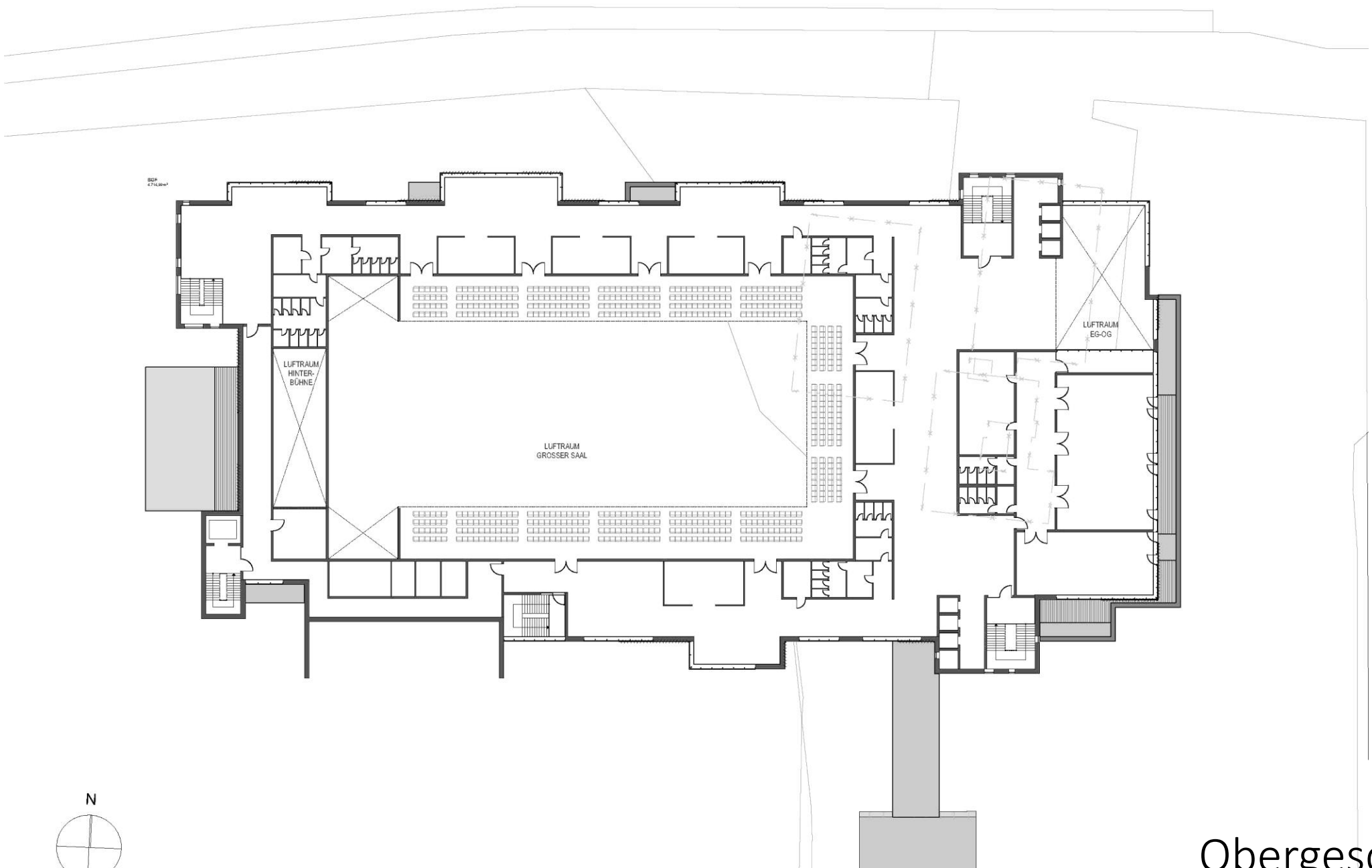
Untergeschoss



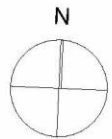
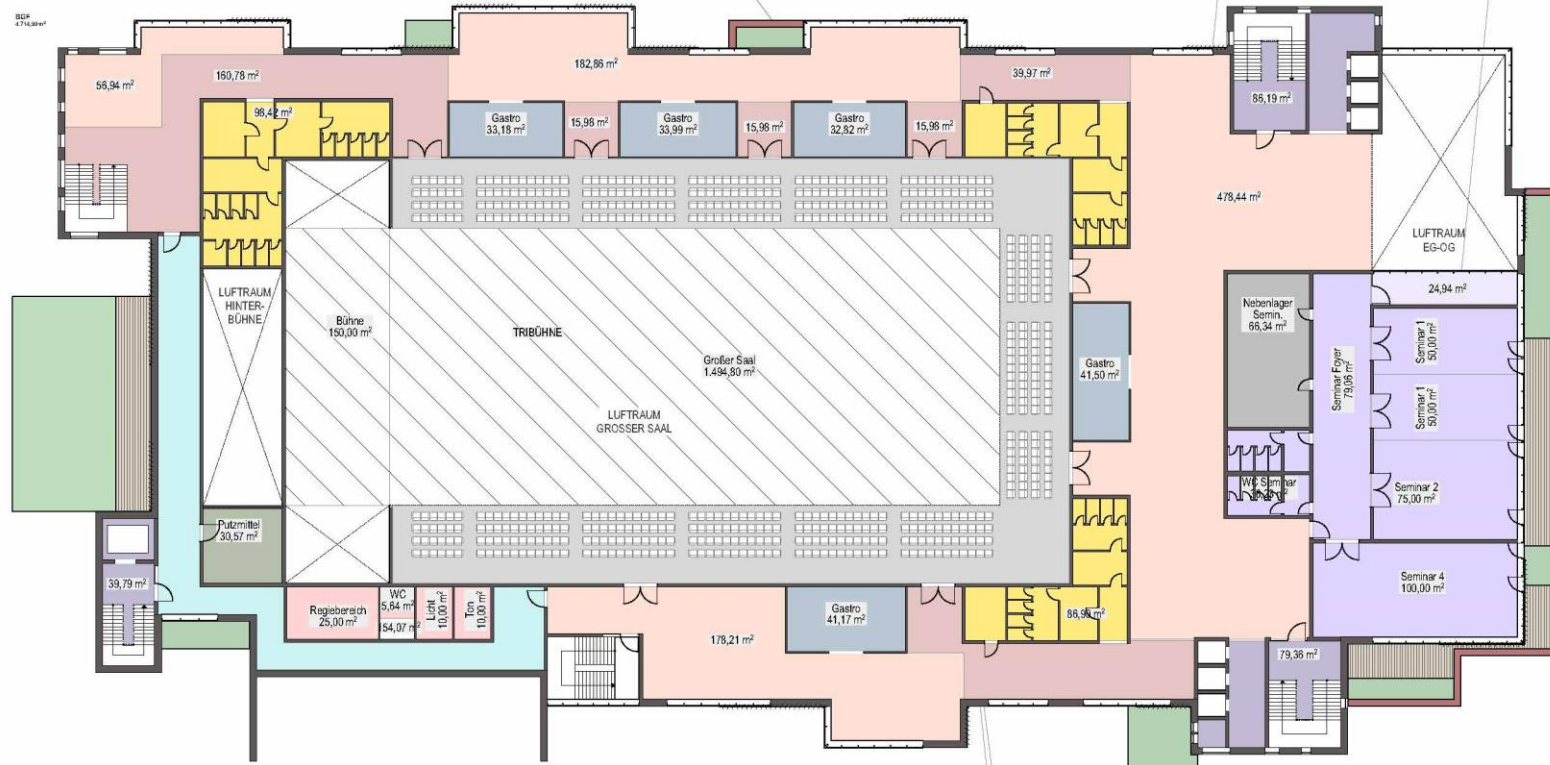
Erdgeschoss



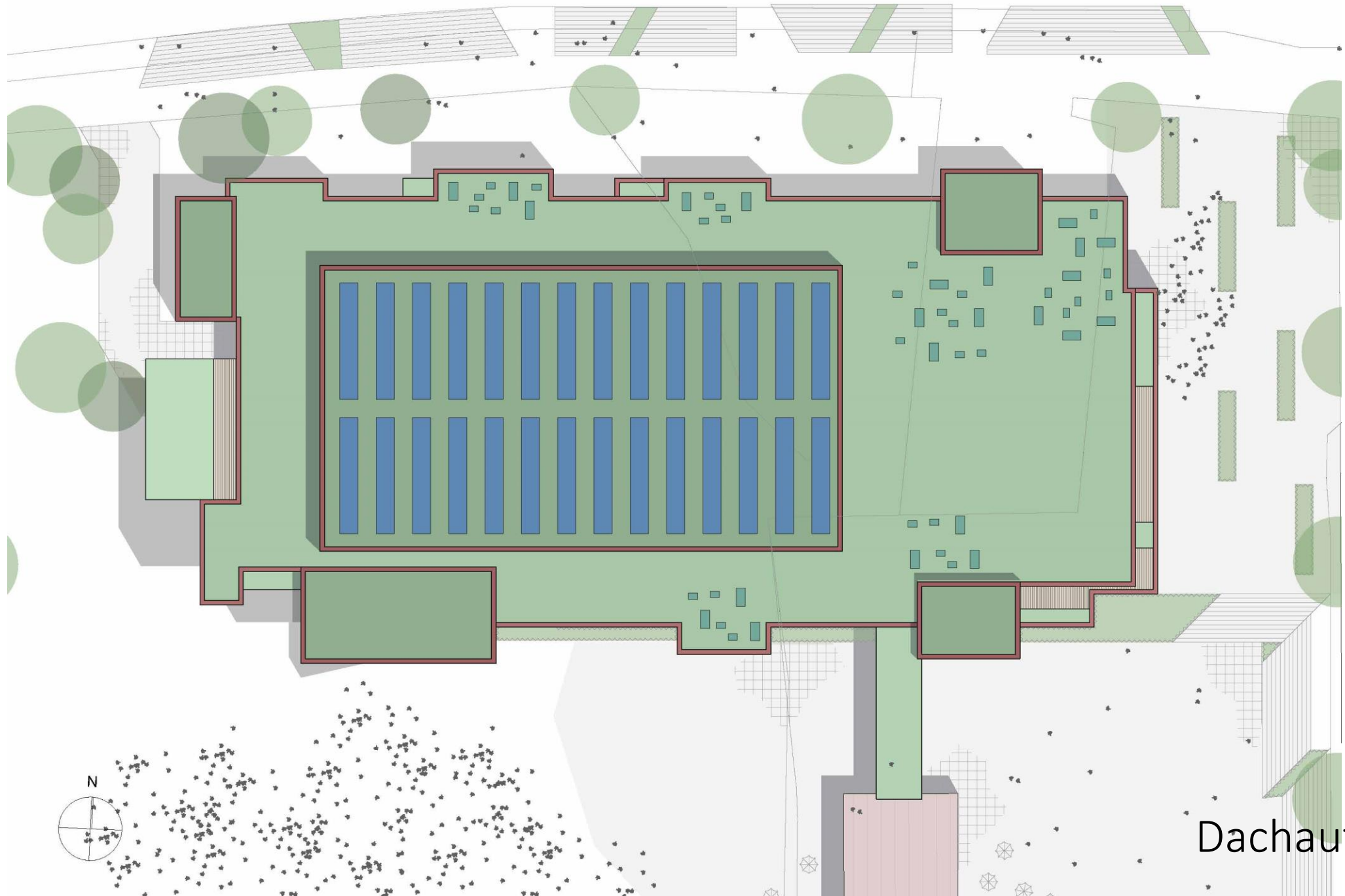
Erdgeschoss



Obergeschoss



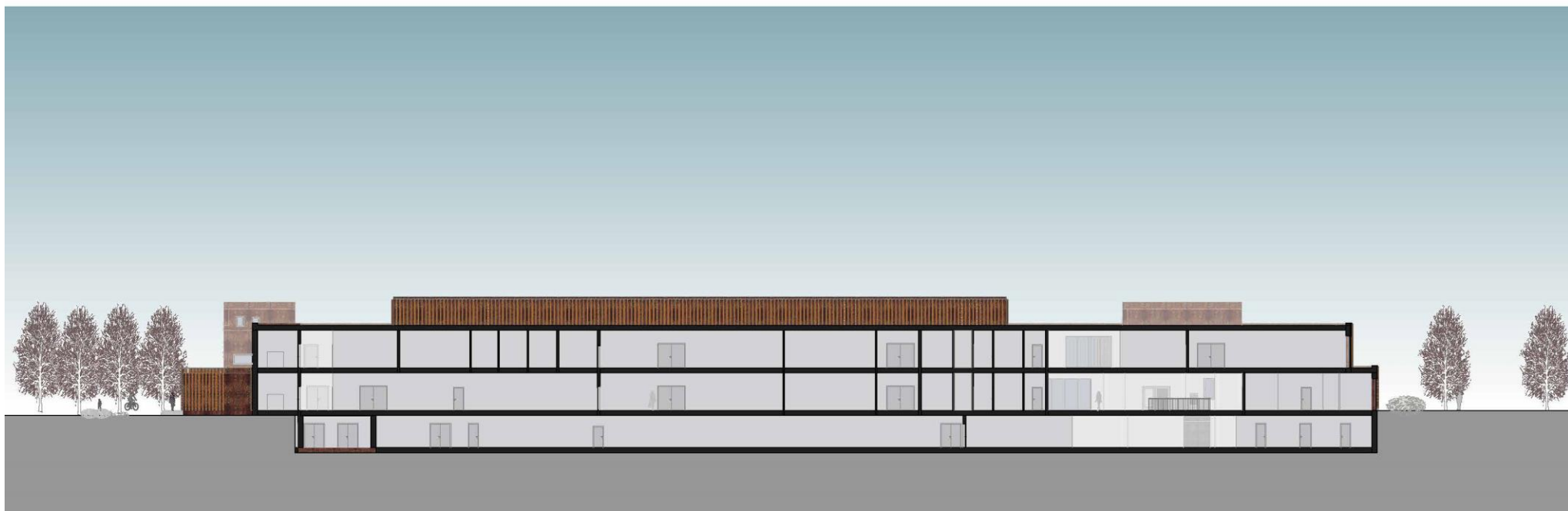
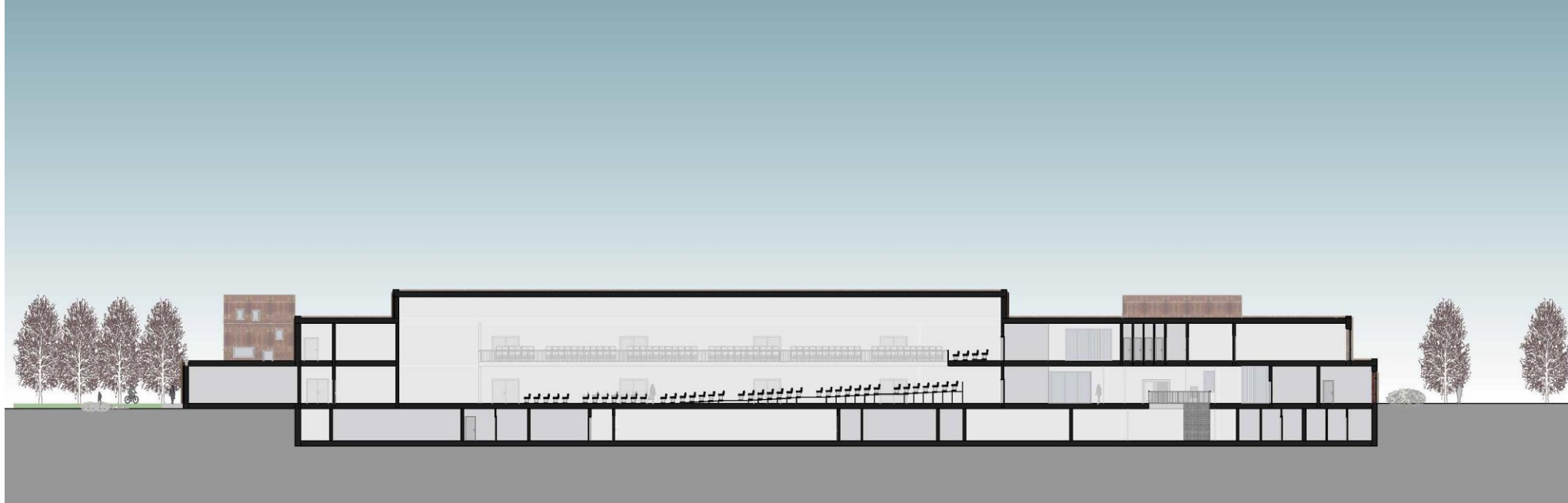
Obergeschoss



Dachaufsicht

Schnitte und Ansichten







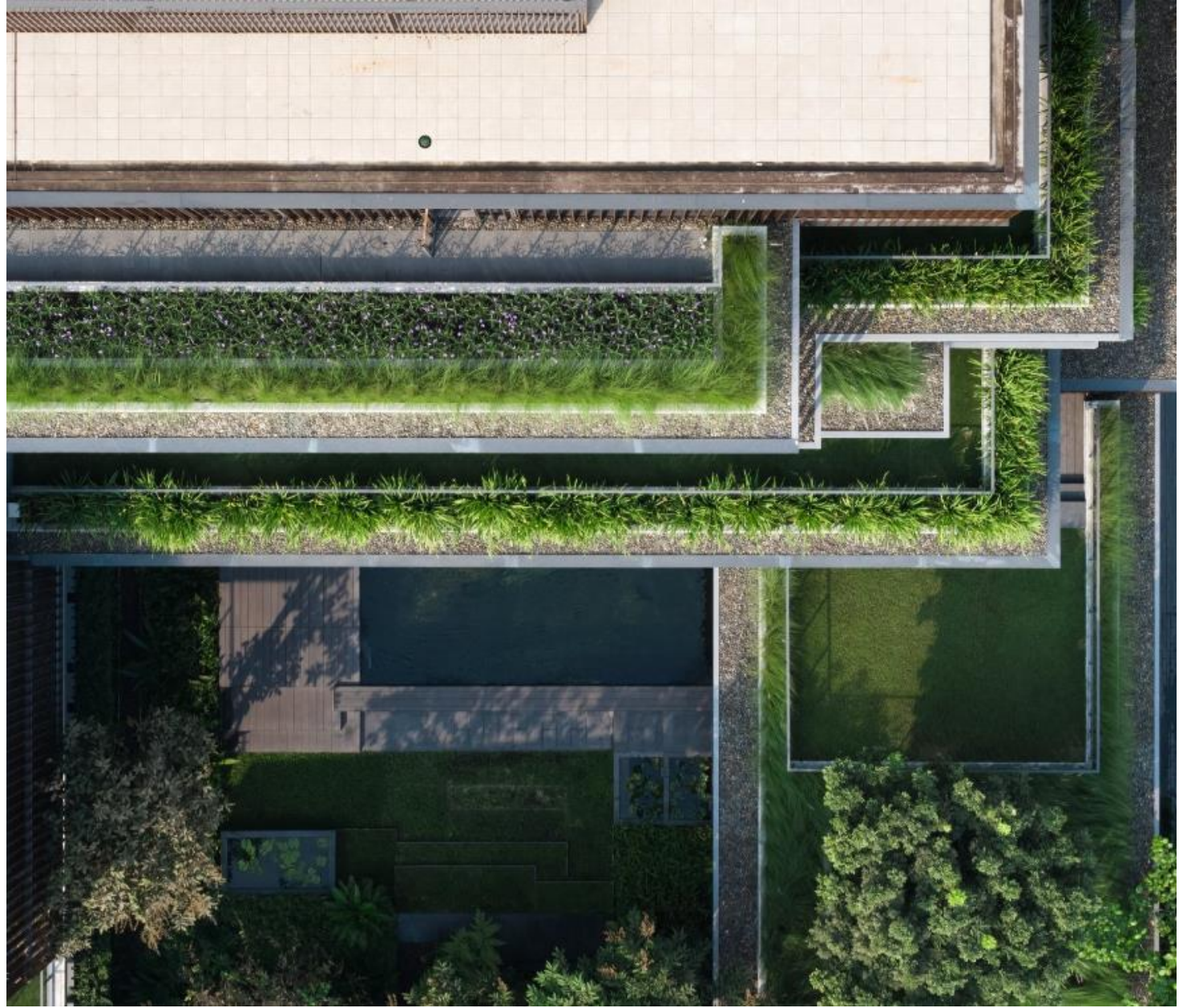


Gestaltung Promenade



Architektur und Materialien

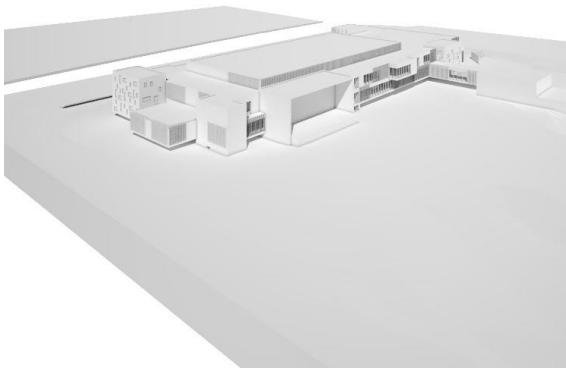
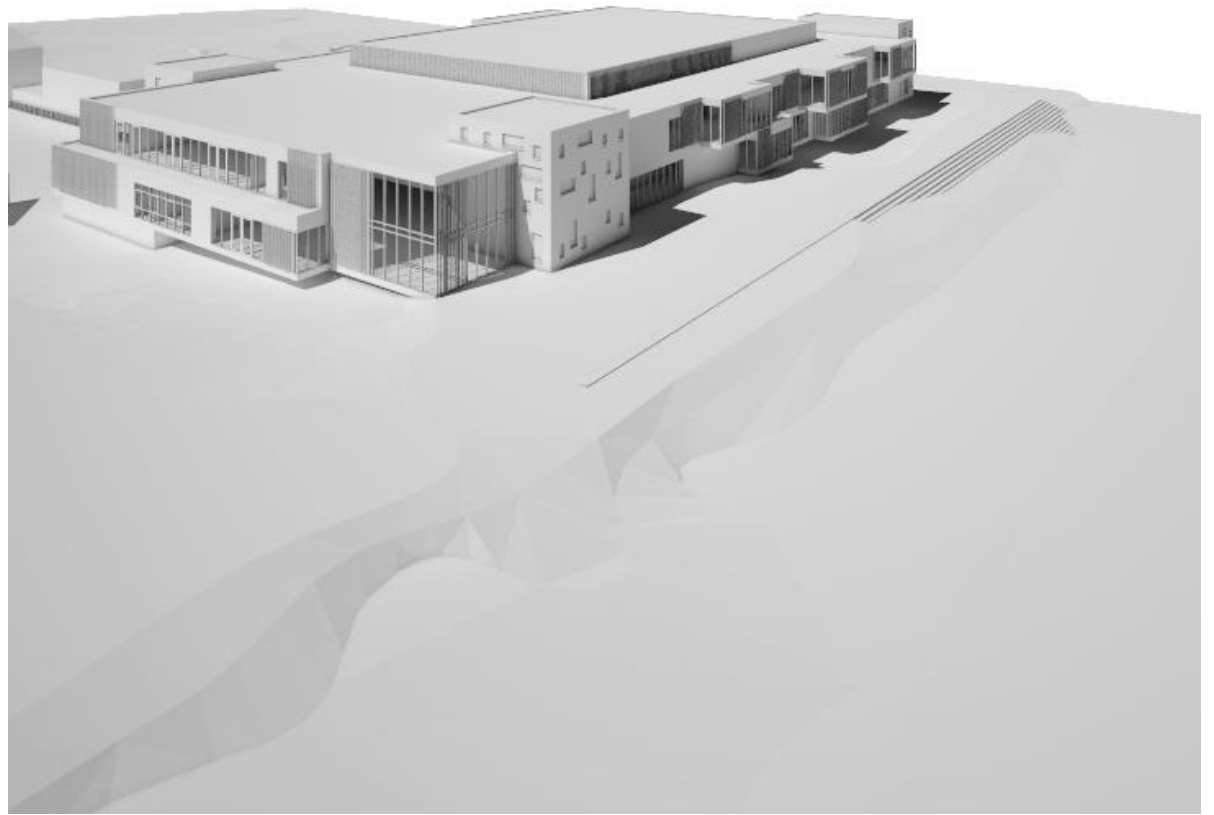




Veranstaltung innen



Volumenstudien

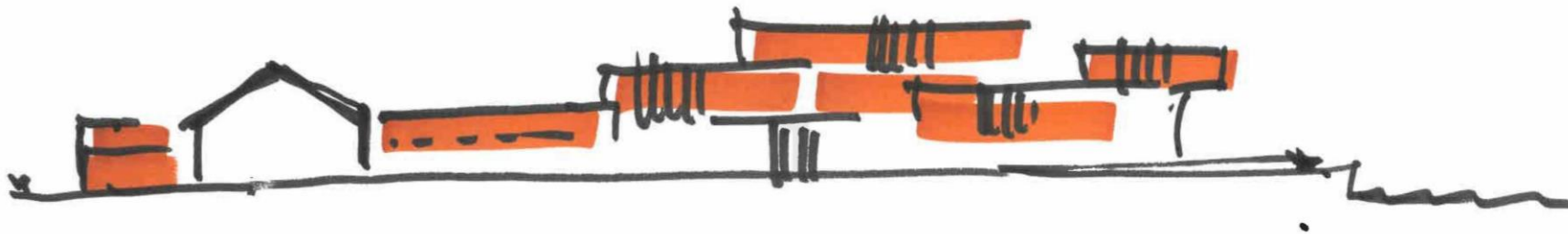


Visualisierung



VIMI U

Vielen Dank für Ihre
Aufmerksamkeit



LADEHOFF
ARCHITEKTURBÜRO